

Bell Direct ViewPoint quick start guide

Contents

1. **Accessing ViewPoint**
2. **Preset worksheet layouts**
3. **Amending and Creating worksheets**
4. **Highlighted Widgets**
5. **Other ViewPoint features**
6. **Contact us**

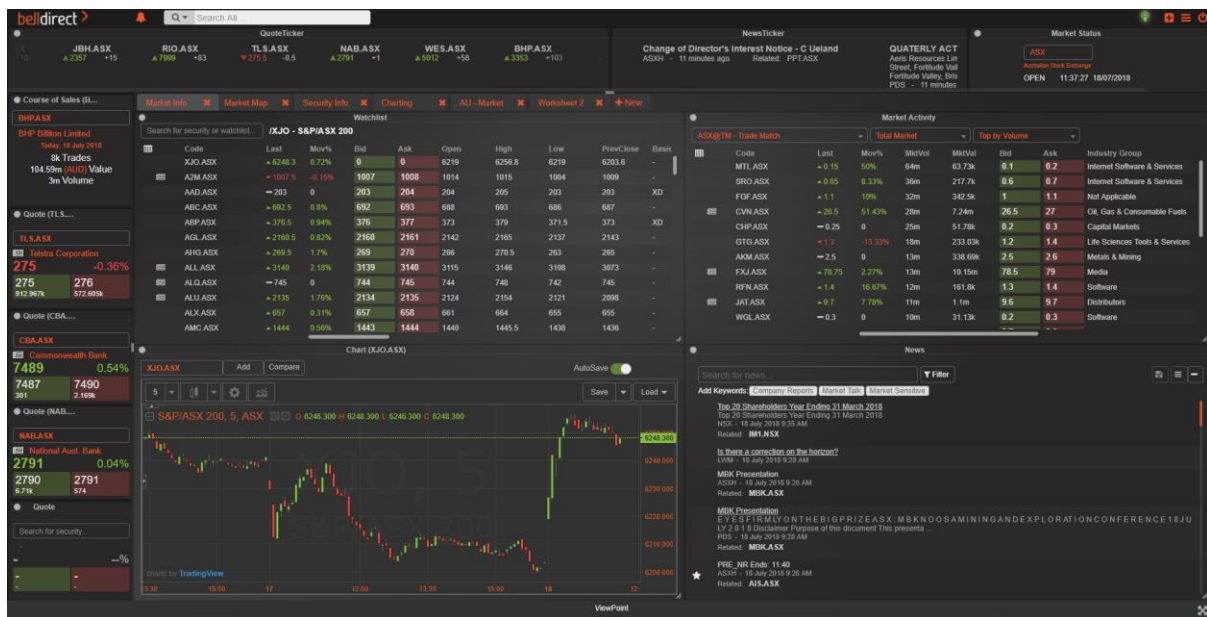
Accessing ViewPoint

To access ViewPoint, click on the icon that you currently use to access webiRESS. ViewPoint will then load in your browser.

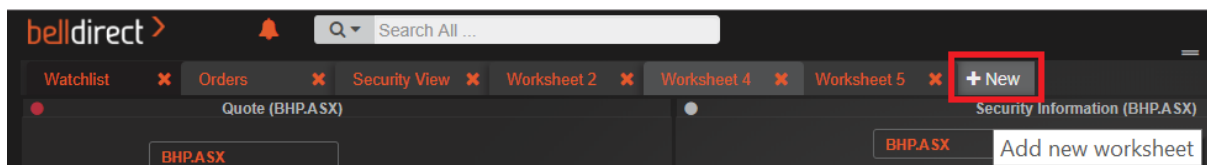


Preset worksheet layouts

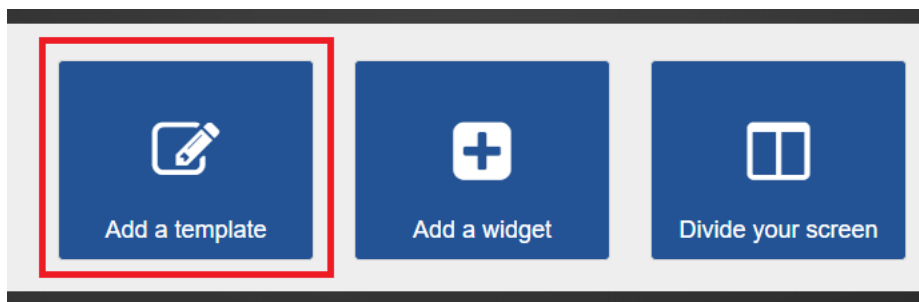
When you first access ViewPoint, you will be presented with a preset display to help you get started:



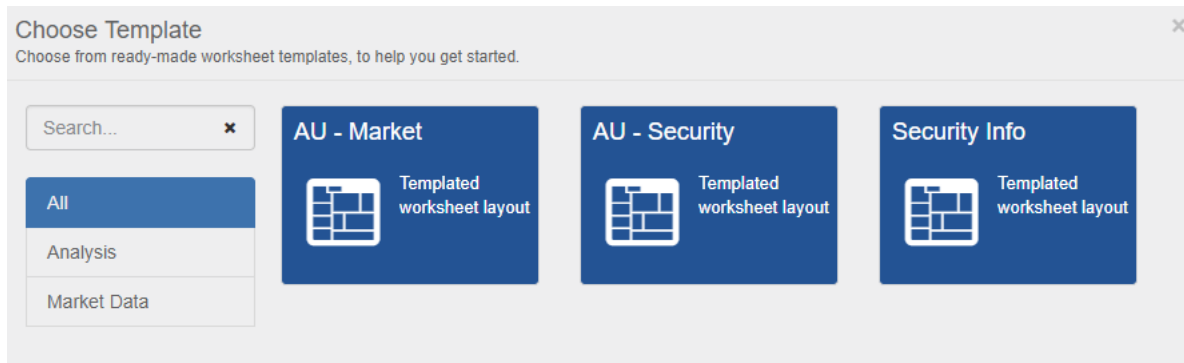
There are a selection of other preset templates for you to use. To access these, click on **+ New** to add a new worksheet:



Click on Add a template:



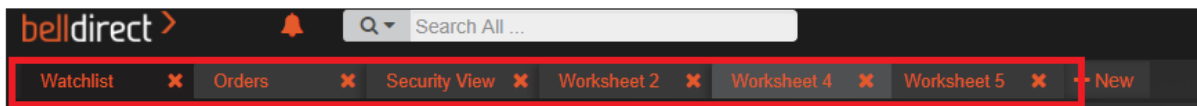
And choose a template to apply:

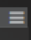


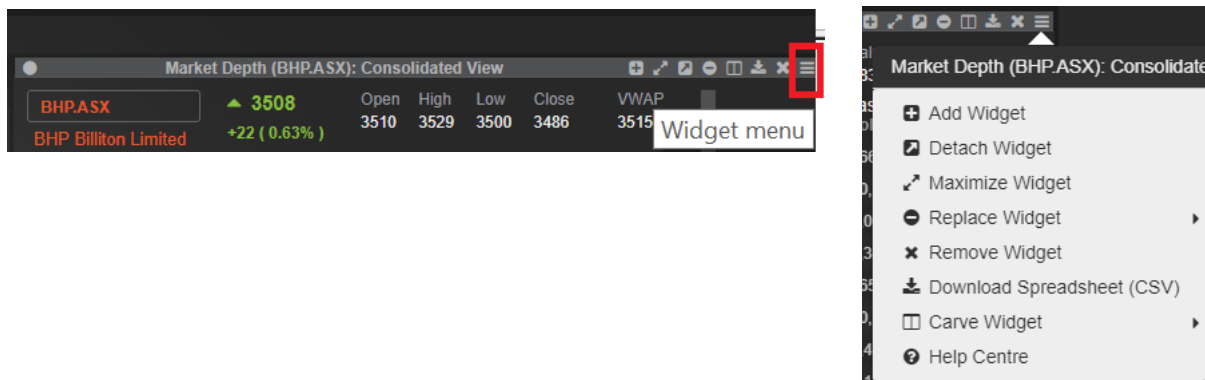
Amending and Creating worksheets

You can amend any of the existing preset worksheets. Your layout will be saved when you log out of your ViewPoint session and will load from where you left it the next time you access ViewPoint.

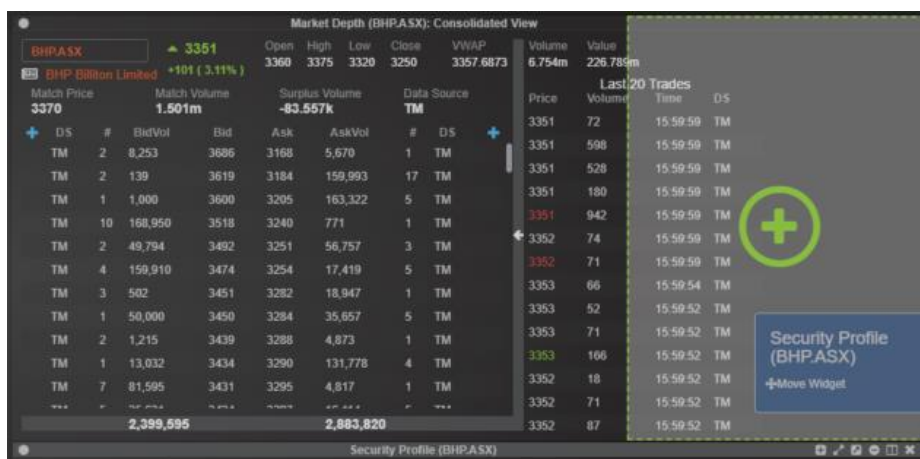
ViewPoint allows you to create multiple worksheets and easily switch between them.



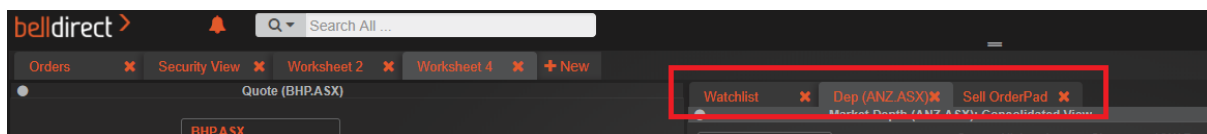
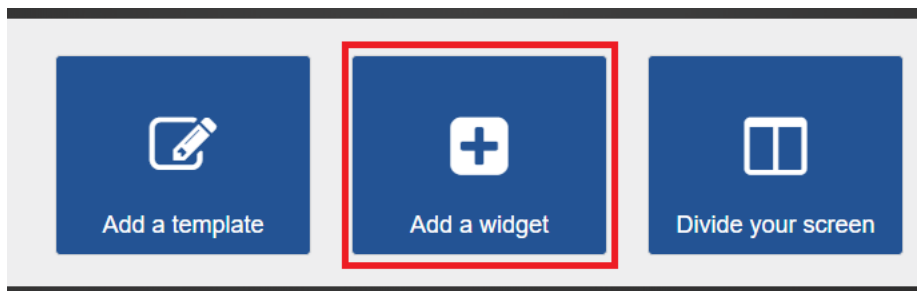
Clicking on the  in the top right of each widget, gives you several options to change the displayed widgets:



You can drag and drop widgets by clicking the  icon in the top right-hand corner of ViewPoint. Select which widget you want to add to the worksheet and then drag and drop onto the worksheet.



You can set up multiple widgets into the same widget space.



If you don't want to use one of the preset templates, you can start from a blank slate and create your own worksheets using the Add a Widget and Divide your screen options.

Highlighted Widgets

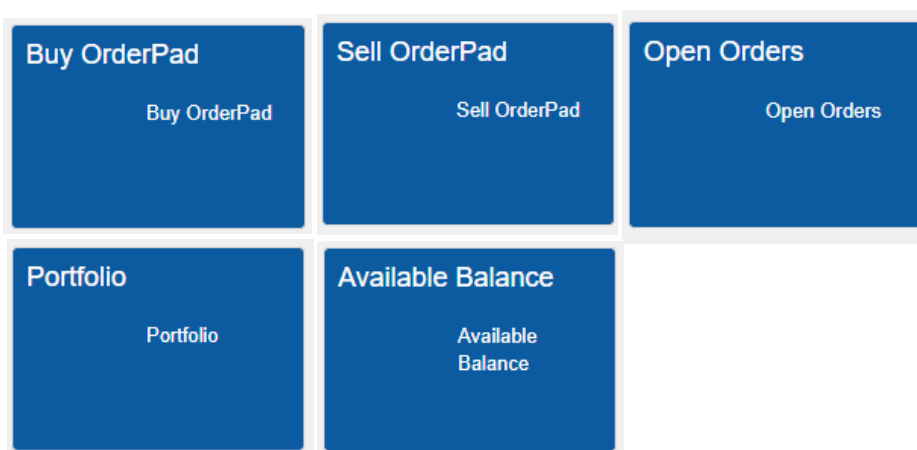
Buy OrderPad: prepopulates your order pad with a buy instruction.

Sell OrderPad: prepopulates your order pad with a sell instruction.

Open Orders: track outstanding orders.

Portfolio: view your portfolio holdings.

Available Balance: displays current trading funds available.



Charts: gives you access to a wide range of indicators and drawing tools.

Charts can also be saved for later use.



Chart

Displays security information graphically

Watchlist: enables you to create a customised watchlist.

Watchlist

Displays watchlist information

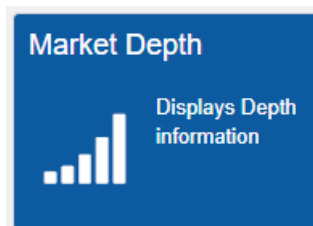
Note: any existing watchlists that you have created in **webIRESS** will automatically be available for you in **ViewPoint**.

If a news item has been recently released that relates to one of the security codes in your watchlist, an icon will display next to that security code. Clicking on the icon will bring up the relevant news item for you.

Code	Last	Mov%	Bid	Ask	Open	High	Low	PrevClose	Basis	Status	MktVol	MktVl	MktVWAP	P/E	52WkHi	52WkLo	Volume	VWAP	MktCap	DivAnnt	DivHist	Value	MPrc
AMC.ASX	1450	0.97%	1450	1451	1440	1466	1438	1436	-	A	4m	54.96m	1.4525k	20.9084	1643	1312	4m	1,452.4509	16.63b	0	56.02	54.96m	0
SYD.ASX	715	0.7%	714	715	713	718	707	710	XD	A	3m	24.01m	713.8579	46.0103	762	631	6m	713.2734	16b	18.5	36.5	40.97m	0
JHX.ASX	2246	0.56%	2245	2246	2234	2255	2225	2233	XD	A	800k	19.70m	2.2457k	52.1719	2419	1703	800k	2,245.6029	9.80b	31.34	41.9064	19.70m	0
LLG.ASX	1802	1.19%	2062	2063	1916	2012	1971	1979	-	A	975k	18.50m	2.0619k	14.2494	2048	1511	1m	2,061.7502	11.36b	0	87	21.50m	0
CPA.ASX	19961	1.26%	19959	19961	19108	20057	19789	1972	-	A	708k	157.26m	19.1471b	44.127	20283	19101	978k	19,962.7168	89.48b	0	112.0223	155.4m	0
NEWS	16078	1.44%	20233	20267	20222	20391	20001	19918	-	A	145k	39.41m	30.2507b	52.2025	20966	13844	145k	20,250.6765	11.5b	0	210	29.41m	0
SRV.ASX	2607	1.41%	2655	2659	2624	2664	2618	2620	-	A	1m	31.9m	2.6517k	24.2296	2680	2369.5	1m	2,651.6552	11.13b	0	78	31.9m	0
QAN.ASX	664	1.84%	664	665	663	668	652	652	-	A	6m	39.24m	663.0886	12.5986	673	477	6m	663.0886	10.98b	0	14	39.24m	0
ALL.ASX	3143	2.28%	3140	3143	3115	3163	3108	3073	-	A	1m	43.97m	3.1443k	39.8958	3295	1961	1m	3,144.3292	19.02b	0	39	43.97m	0
RHC.ASX	5584	2.36%	5584	5586	5492	5626	5476	5455	-	A	601k	33.56m	5.5857k	24.0793	7618	5301	601k	5,585.7046	11.02b	0	139	33.56m	0
SDI.ASX	0.45	12.5%	0.4	0.5	0.45	0.45	0.45	0.4	-	A	1m	4.94k	0.45	-7.5	0.9	0.3	1m	0.45	32.5m	0	0	4.94k	0
GPX.ASX	22	0	22	24.5	0	0	0	22	-	A	0	0	0	-3.6667	35	19	0	0	17.32m	0	0	0	0
RIO.ASX	7951	0.44%	7950	7952	8005	8023	7943	7916	-	A	2m	170.1m	7.9793k	12.6483	8789	6211	2m	7,979.6788	32.65b	0	366.25	170.1m	0
MOO.ASX	12410	2.28%	12406	12410	12200	12410	12187	12153	-	A	679k	83.9m	12.3595k	16.3677	12707	8228	721k	12,356.0769	41.3b	0	525	89.12m	0
NAB.ASX	2795	0.18%	2794	2795	2798	2893	2787	2790	-	A	3m	71m	2.7944k	14.3554	3298	2598	3m	2,794.4182	76.28b	0	198	71.1m	0
WOW.ASX	3107	0.26%	3106	3107	3120	3147.5	3104	3099	-	A	3m	93.03m	3.1205k	22.5588	3148	2445	3m	3,120.4685	40.7b	0	93	97.96m	0
WES.ASX	4979	0.44%	4976	4979	4966	5030	4966	4954	-	A	1m	66.05m	4.991k	37.3293	5047	4001	1m	4,990.9641	56.17b	0	223	66.05m	0
AMP.ASX	364	1.39%	362	364	360	365	359	359	-	A	7m	25.56m	362.6662	12.4232	549	353	9m	362.1873	10.48b	0	29	32.77m	0
ANZ.ASX	2902	0.31%	2898	2903	2901	2907	2892	2893	-	A	3m	91.27m	2.9013k	12.3964	3080	2607.5	3m	2,901.2423	83.53b	0	160	97.11m	0

Market Depth: gives you both access to a Consolidated View of Market Depth and a Market Detail display, by clicking on the icon.

Market Depth (BHP.ASX): Consolidated View											
BHP.ASX		▲ 3508	Open	High	Low	Close	VWAP				
BHP Billiton Limited		+22 (0.63%)	3510	3529	3500	3486	3515.6661				
+	DS	#	BidVol	Bid	Ask	AskVol	#	DS	+		
	TM	3	44,017	3508	3512	12,208	1	TM			
	TM	14	83,219	3507	3514	31,409	2	TM			
	TM	5	17,909	3506	3515	3,539	2	TM			
	TM	4	7,344	3505	3516	79,275	4	TM			
	TM	5	57,360	3504	3518	12,187	1	TM			
	TM	1	1,304	3503	3519	50,879	4	TM			
	TM	5	12,627	3502	3520	3,650	2	TM			
	TM	11	93,630	3501	3521	29,383	3	TM			
	TM	8	8,759	3500	3522	26,539	2	TM			
	TM	3	11,607	3499	3523	44,389	4	TM			
	TM	5	16,616	3498	3524	17,084	2	TM			
	TM	2	1,780	3496	3525	9,582	3	TM			
	TM	4	5,637	3495	3527	17,353	3	TM			
	TM	4	74,822	3494	3528	17,552	5	TM			
			1,109,219			919,093					

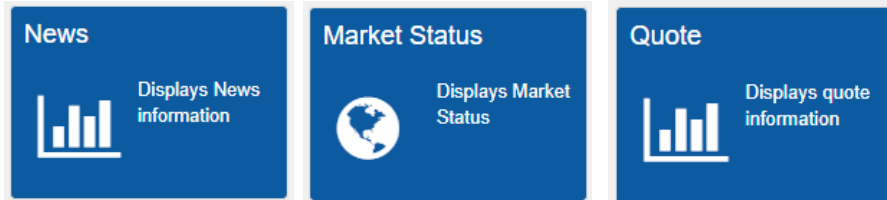


Market Depth (BHP.ASX): Detail View											
BHP.ASX		▲ 3508	Open	High	Low	Close	VWAP				
BHP Billiton Limited		+22 (0.63%)	3510	3529	3500	3486	3515.6661				
-	DS	BidVol	Bid	Ask	AskVol	DS	-				
	TM	5,536	3508	3512	12,208	TM					
	TM	37,336	3508	3514	12,201	TM					
	TM	1,145	3508	3514	19,208	TM					
	TM	698	3507	3515	200	TM					
	TM	134	3507	3515	3,339	TM					
	TM	1,000	3507	3516	12,194	TM					
	TM	7,500	3507	3516	37,251	TM					
	TM	7,500	3507	3516	1,144	TM					
	TM	7,500	3507	3516	28,686	TM					
	TM	7,500	3507	3518	12,187	TM					
	TM	7,500	3507	3519	333	TM					
	TM	7,500	3507	3519	12,184	TM					
	TM	7,500	3507	3519	37,219	TM					
	TM	7,500	3507	3519	1,143	TM					
			1,109,219			919,093					

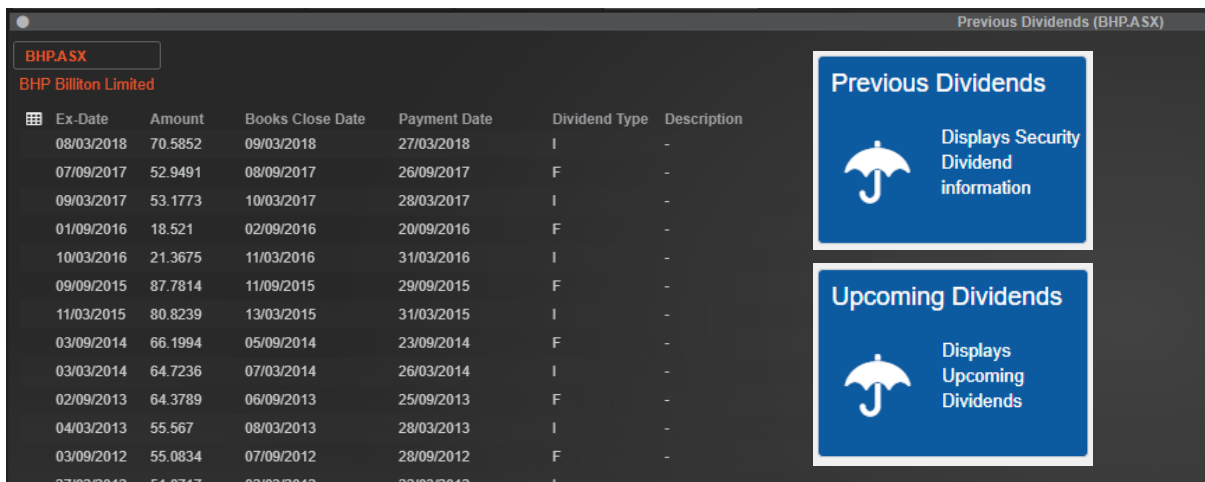
News: gives you access to news items in real time.

Market Status: displays the market status to help you keep abreast of the trading day.

Quote: provides live dynamic pricing information.

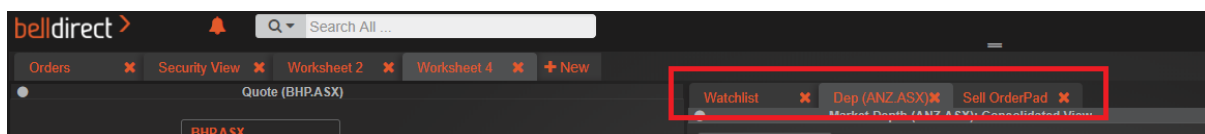


Viewpoint gives you access to **Previous Dividend** information as well as details on upcoming dividends with the **Upcoming Dividends** widget.

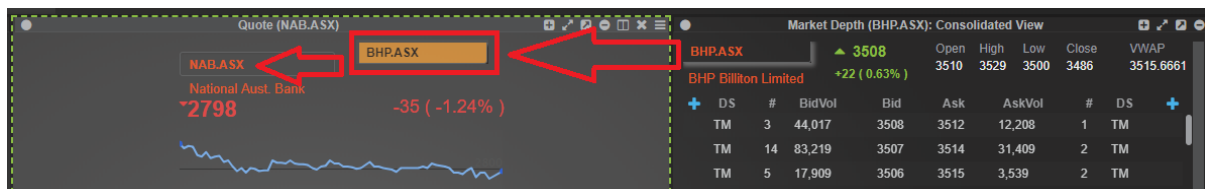


Other ViewPoint features

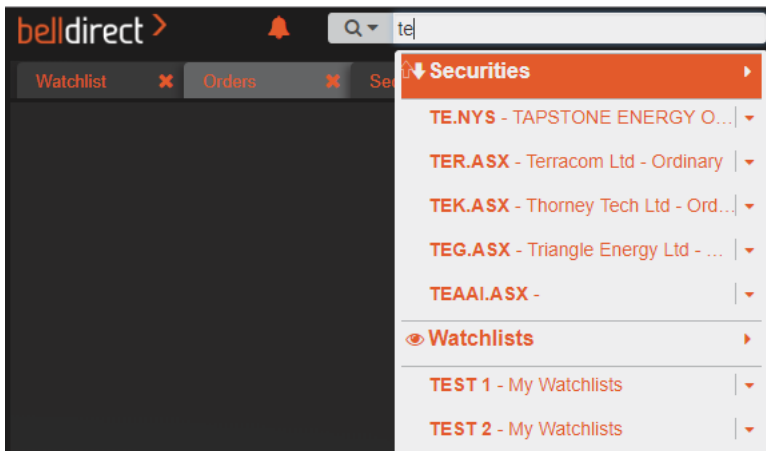
You can set up multiple widgets into the same widget space.



You can drag and drop security codes across widgets.



The search bar at the top of the ViewPoint screen lets you search for any matching content (for example security codes, watchlists and news items) through the entire application.



Need help?

For further information on ViewPoint please contact customer support at support@belldirect.com.au or 1300 786 199.